

VOL XI

ARK JOURNAL

SPACES

OBJECTS

PEOPLE

DESIGN

METAPHORS

LATIN AMERICAN

ART AS MEMOIR

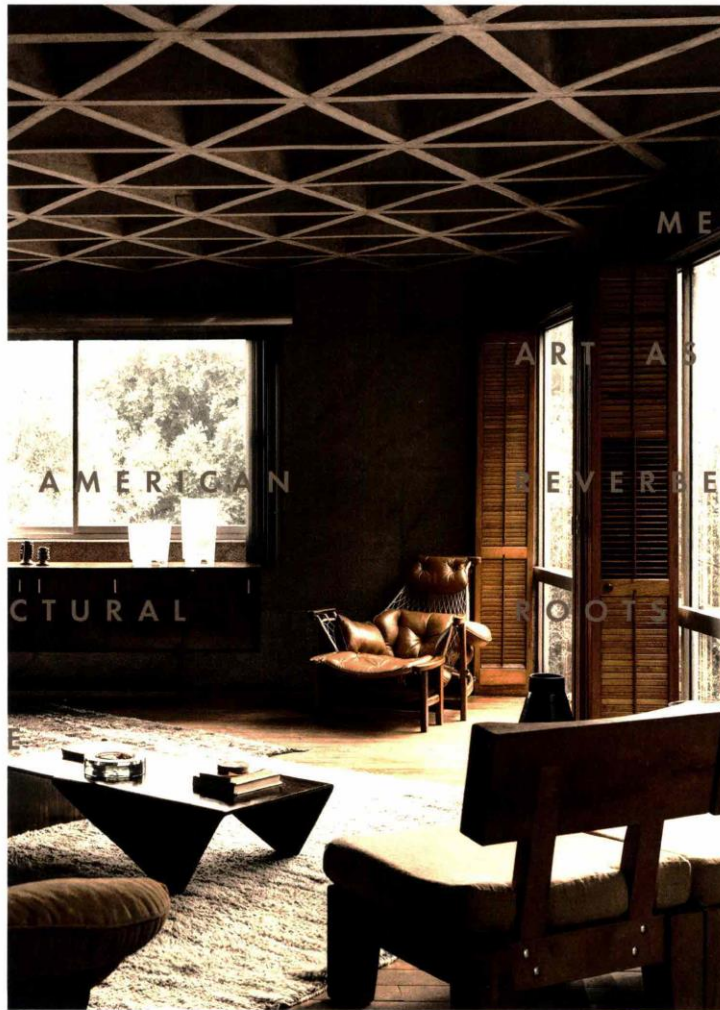
ARCHITECTURAL

REVERBERATIONS

CREATIVE

ROOTS

CIRCLES



PRINTED IN SWEDEN UK£20.00
CAN\$53.25 AU\$47.75 US\$43.25



CESAR



Photo: Andrea Ferriani | Styling: Studiopappa | Art: Garcia Cumini

Portraits of me.

Kitchen: **Tangram**
Design: **Garcia Cumini**

Milano • Paris • Vancouver

cesar.it

DESIGN JOURNAL



CALL ME BY YOUR NAME

100 sedie in una notte is a series of 100 black, minimal chairs inspired by a Rainer Maria Rilke poem and individually named by Italian writer Achille Bonito Oliva. Designed by Paolo Pallucco in 1990, the original series of 100 signed and numbered black chairs were produced in a limited edition of four, and now Paris gallery Ketabi Bourdet has a rare set of 12 available. **KETABI BOURDET**



SIXTY BY SESTIG

For his design of the historic La Réserve Hotel in Knokke, on the Belgian coast, Belgian architect Glenn Sestig created a custom range of taps and bathroom accessories that embody his characteristic expression. The *Sixty* collection produced by Italian bathroom and kitchen specialists CEA marries archetypal forms in the pared-back and yet opulently refined style Sestig is known for. The moody striations of the stone used in the monumental washbasin and folding mirror blends with the black ivory finish of the stainless steel used in the taps and bathroom accessories. **CEA**

DOUBLE TRACK

Designed by Giacomo Moor for Living Divani. The *Railway* family of storage units gets its name from the square tubular steel used for the frame, but also horizontally on a 45-degree angle, to become the perfectly aligned parallel tracks on which the wooden doors slide. **LIVING DIVANI**



SLIDE AND DIVIDE

Like the swan gliding with fluent ease, the double-sided *Sail* panels from Rimadesio belie the degree of technology, expertise and effort that goes into these versatile space dividers that can instantly create room. Available in walnut or heat-treated oak veneer, the glass and aluminium panels move on a fixed rail system that can be discreetly integrated into ceilings and walls. **RIMADESIO**

