

ELLE

UK

DECORATION

APRIL 2025

SPECIAL EDITION
KITCHEN GUIDE 2025
IDEAS, INSPIRATION & ADVICE

**SOOTHE OR
PROVOKE?**
THE GREAT
STYLE
DILEMMA

EXCLUSIVE:
BRITISH TALENT
TO WOW MILAN
DESIGN WEEK

**AT HOME
WITH DECO
SUPERSTARS**



PLUS NEW-SEASON FABRICS, WALLPAPERS & PAINTS



The music box

Step inside the Toronto penthouse of Grammy-winning music producer Noah '40' Shebib, which Reflect Architects turned into a live-in instrument

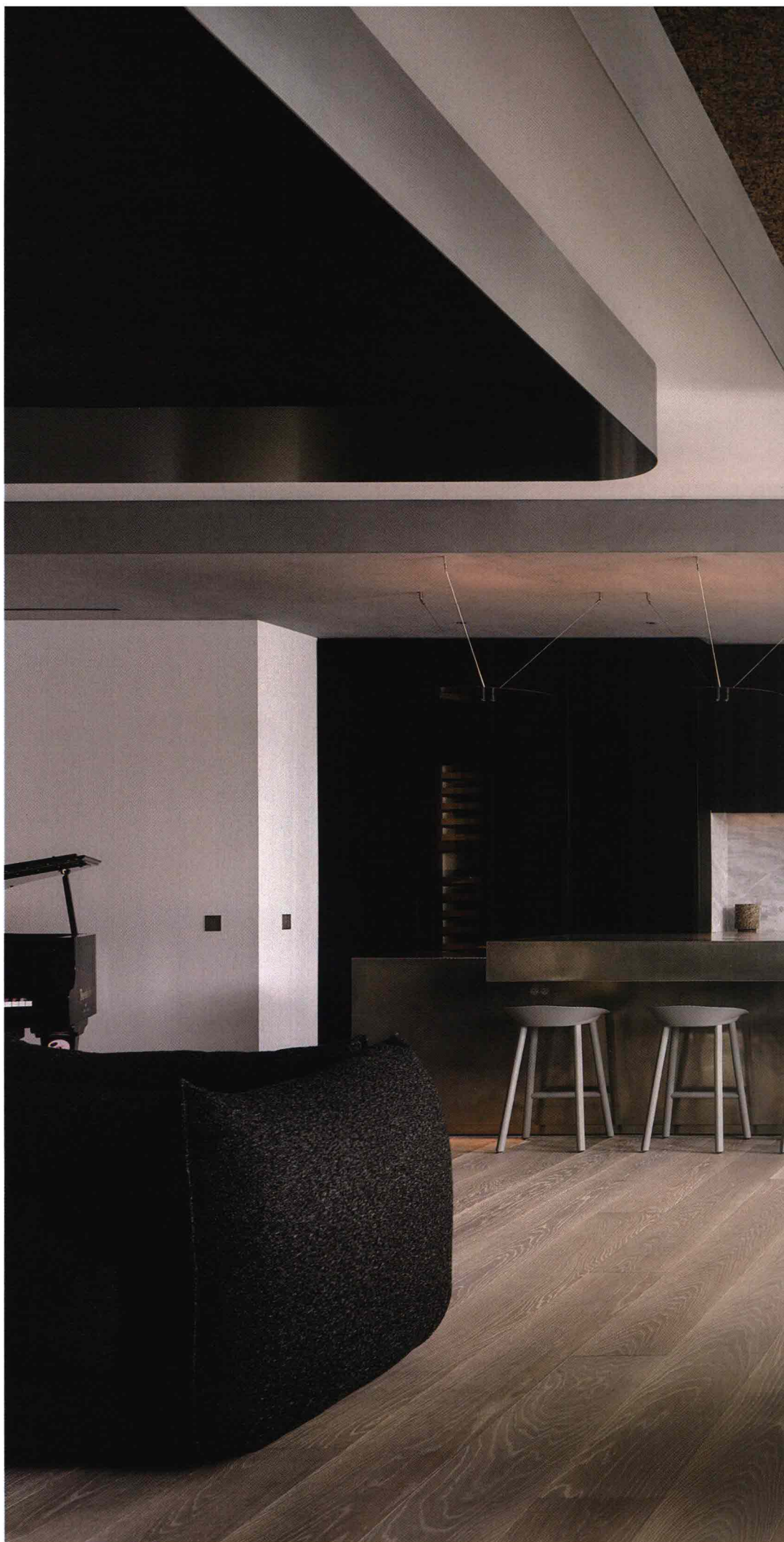
WORDS

PHOEBE FRANGOUL

PHOTOGRAPHY

DOUBLESPEACE, NATHAN LEGIEHN

Living area Three cork and aluminium ceiling elements – their design inspired by amps and speakers – dampen noise and delineate the respective areas below. Improving energy efficiency and replacing the home's ageing glazed wall was also a priority; a high-performance system of large glass panels has improved the quality of light. A custom glass-and-stone dining table by Sabine Marcelis is fitted with a CAT-6 connection that allows Noah to remotely access his music studio. The table is surrounded by Stefan Diez's 'This' dining chairs for e15. Lukas Peet's 'Column' horizontal pendant hangs over the table, as well as in the living areas >



Kitchen Nicolas Schuybroek's sculptural tin island, manufactured by Obumex, was designed to resemble a deconstructed 1980s boombox – one of the many subtle nods to Noah's musical universe. The island is flanked by three 'Jean' stools by Stefan Diez for e15, with Davide Groppi's 'Cartesio' lights overhead. The sleek tap is the 'FRE149' from CEA Design, the splashback is Blue de Savoie marble and the truffle-brushed natural-oak flooring came from Moncer in Toronto

Seating area Piero Lissoni's 'Sumo' sofa for Living Divani faces a pair of 'Feel Good' chairs by Antonio Citterio for Flexform across a 'Slope' coffee table by Sofie Østerby Atelier. To the side of the sofa is a small ClassiCon 'Corker No. 2' side table in natural cork. Above the fireplace hangs Bobbie Burgers' *Softly Touch Down #1*, loaned from Nicholas Metivier Gallery. The raw-concrete columns were part of the original structure of the building ➤

