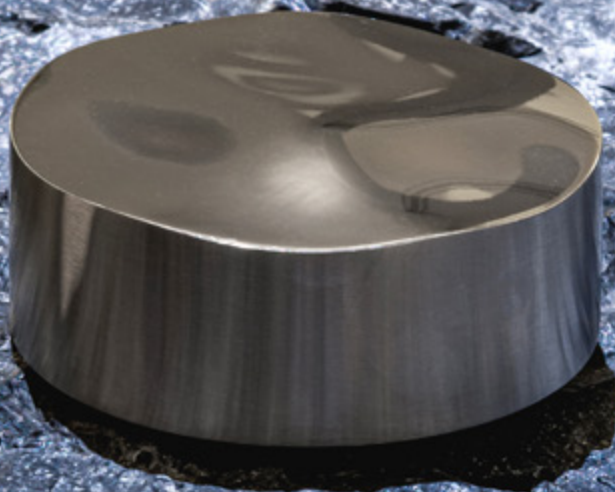


# ALLURE

Design by Natalino Malasorti



CEQ

## ALLURE

The ALLURE collection was conceived with the aim of creating an extremely attractive, captivating and seductive product: a jewel to be set into bathroom walls, designed to make the senses vibrate through both sight and touch. A mirage that is not only visual but also tactile, leaving the user with a lingering desire for the experience.

The interplay of light and shadow generated by the surface of the handle creates an illusory, enchanting wave, almost as if to recreate matter in its liquid state. Here, steel takes shape, revealing the boundary between material illusion and reality. The polished finish of the steel becomes a negation of matter itself: the product disappears into its reflections, as though it were a mirage.

The collection is defined by the polished surface handle, while its edge and all complementary elements are made of satin-finished stainless steel, also available in CEA's special finishes (Black Diamond, Bronze, Copper, Light Gold, Black Ivory).





CEADESIGN FACTORY  
Via Brenta, 8 - Pove del Grappa - IT

CEA MILANO  
Via Brera, 9 - Milano - IT

CEA CORTINA  
Via Gilardon, 31A - Cortina d'Ampezzo - IT

CEA GHENT  
Kleindokkaai, 20 - Ghent - BE

CEA NEW YORK  
515 West 29th Street - New York - USA

PRESS KIT

[ceadesign.it/media/press/ALLURE.zip](http://ceadesign.it/media/press/ALLURE.zip)



For more press information  
please contact  
[marketing@ceadesign.it](mailto:marketing@ceadesign.it)

[ceadesign.it](http://ceadesign.it)

[info@ceadesign.it](mailto:info@ceadesign.it)

